



KOP-FLEX®
*New European
Manufacturing &
Service Center for
High Performance
Couplings*



EMERSON. CONSIDER IT SOLVED.®

New European Manufacturing and Service Center

KOP-FLEX now provides greater service and delivery to Europe and Asia through a new state-of-the-art European manufacturing and service center in Nove Mesto, Slovakia.

The new service center is designed to fulfill the European, Middle East and Asian requirements for KOP-FLEX® brand couplings. Manufacturing and service for the region.

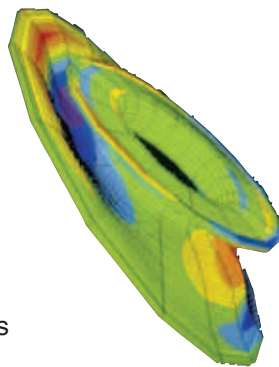
All European/Middle East/Asian customers will benefit from the new facility. KOP-FLEX serves the industries with demanding applications such as: petrochemical, gas pipeline, refineries, LNG, power plants, energy storage, marine propulsion, turbomachinery, motors and a wide range of pumps. Customers are able to reduce logistics cost, expedite orders and shorten lead times.

KOP-FLEX's new Slovakian manufacturing facility welcomes visitors. This state-of-the-art facility is equipped with the latest technology:

- Computer controlled (CNC) machining centers
- Turning centers
- High speed dynamic balancing
- Non-destructive testing and inspection equipment: Coordinate measuring machine (CMM) and Magnetic particle inspection (MPI)

KOP-FLEX, the technology leader in industrial power transmission couplings, offers:

- Broadest range of high performance couplings
- New product development
- Customization
- Engineering support and patents
- CAD support and finite element vibration analysis
- ISO 10441 (API 671) or ISO 13709 (API 610) compliance
- Reduced cost and shorten lead times
- Technical website



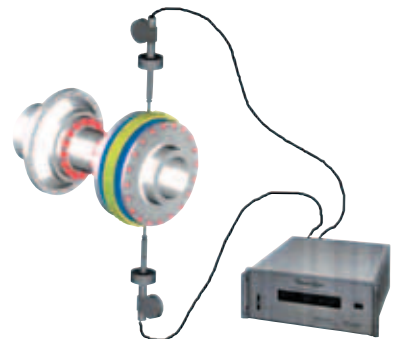
KOP-FLEX holds more active patents than anyone in the industry. The KOP-FLEX staff lead the industry in authoring and presenting technical papers in leading international trade journals and trade shows. The latest papers and information can be viewed at

www.kop-flex.com/technical



The broadest range of couplings come from KOP-FLEX

KOP-FLEX offers high-performance (high speed) couplings including non-lubricated disc, diaphragm, gear couplings, and KOP-FLEX's globally accepted POWERLIGN® torque measurement system. "Hybrid couplings", (disc couplings with resilient coupling) for synchronous motor applications or other combinations of couplings are available for specialty applications. KOP-FLEX® brand couplings are custom designed to your specifications or can be designed and manufactured to ISO10441 (API 671) or ISO13709 (API 610) specification. Refer to KOP-FLEX catalog KHP-04 or visit www.kop-flex.com for details.



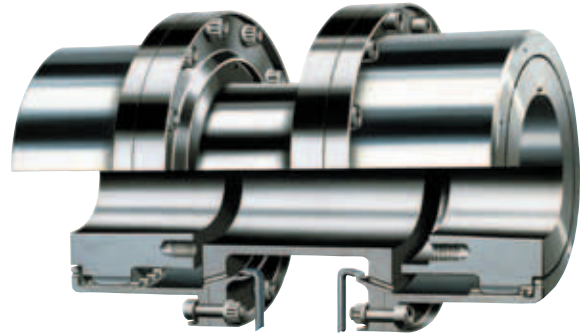
KOP-FLEX's European service and repair

KOP-FLEX is able to offer unmatched customer support by providing service and repair for couplings originally produced by KOP-FLEX as well as those from other manufacturers. Our process of inspecting and repairing couplings is one of the most extensive in the industry.

KOP-FLEX provides one of the industry's most extensive processes for inspection, service and repair.

For Example...High Speed Gear Coupling

- Take digital photographs to record component's condition for engineer's reference.
- Disassemble coupling and tag components.
- Perform nondestructive testing on torque carrying components
 - Magnetic Particle Inspection
 - Dye Penetrate
 - X-ray
- Examine components visually and digitally photograph cracks and/or irregularities.
- Prepare an inspection report containing:
 - Detailed information
 - Photographs
 - Testing results
 - Refurbish, repair, and part replacement recommendations
 - Commercial price and delivery quotation



High Speed Gear Coupling

As required by the application, and/or to meet your specifications, the repaired couplings can be reassembled to original specifications, skimmed as assembly and dynamically balanced to API 671 (ISO10441) or AP1610 (ISO13709). Quick turnaround is assured by KOP-FLEX's complete inventory of flex elements, accessories and nitrided gear components.

SERVED INDUSTRIES	HIGH PERFORMANCE DISC	DIAPHRAGM	HIGH PERFORMANCE GEAR	TORQUEMETER
Refining-Compressor Trains				
Gas Plants	□	□	□	
Catalytic Reforming	6	6	6	
"Cat" Cracking	6	6	6	
Alkylation	6	6	6	
Coking	6	6	6	
Hydrocracking	6	6	6	
Hydrotreating	6	6	6	
Vapor recovery	6	6	6	
Petrochemical - Compressor Trains				
Olefins	6	6	6	6
Aromatics	6	6	6	
Ammonia	6	6	6	6
Refining & Petrochemical Critical Pumps	6	6	6	
Natural Gas - Compressor Trains				
Gas Processing	6	6	6	6
NGL	6	6	6	6
Gas "Lifting"	6	6	6	6
Reinjection	6	6	6	6
Pipeline boosting	6	6	6	6
LNG	6	6	6	6
Power Generation				
Gas & Steam Turbine Gen-sets	6	6		
Boiler Feed Pumps	6	6		
Starter Packages	6	6	6	
Energy Storage				
Motor & Turbine Driven Compressors	6	6		
Expander Driven Generators	6	6		
Marine Propulsion				
Turbine Driven Water Jets	6	6		
Turbine Driven Propellers	6	6	6	
Steam Turbine Gen-sets	6	6	6	
Boiler Feed Pumps	6	6	6	6

KOP-FLEX 24/7 Global Solution

All worldwide support centers work around the clock to provide customer and team service. Call 1-410-768-2000, e-mail us at coupling-engineering@emerson-ept.com or log onto www.kop-flex.com.

KOP-FLEX...The World Leader in Power Transmission Couplings



HIGH PERFORMANCE DISC

- Heat treated alloy components
- Coated stainless steel disc packs
- Custom designed to application requirements



HIGH PERFORMANCE DIAPHRAGM

- Developed under a patented KOP-FLEX design
- Field replaceable flexible elements
- Custom designed for your application



HIGH PERFORMANCE GEAR

- Choose from straight or crowned nitrided gear teeth, depending on your application
- Precision lapped teeth, if required
- Custom designed for your application



TORQUEMETER

- Monitor power (and torque)
- Check calculated power of new turbines and compressor train
- Downtime reduction

For Ordering Information, Contact Your Authorized Distributor or Contact Customer Service at:

KOP-FLEX , INC. (Worldwide)
P.O. Box 1696
Baltimore, MD 21203 (U.S.A.)
Telephone 1-410-768-2000
Fax 1-410-787-8424

KOP-FLEX CANADA, LTD.
19 Metor Drive
Rexdale, ONT M92 1A3
Telephone 1-416-674-7144
Fax 1-416-675-6764

KOP-FLEX , INC.
5-7 Broadway Parade
Elm Park Avenue
Hornchurch, Essex RM12 4RS
United Kingdom
Telephone 1-44-1708-475635
Fax 1-44-1708-455880

e-mail: coupling-engineering@emerson-ept.com
General Contact (Emerson Power Transmission) 1-800-626-2120

Visit us at
www.kop-flex.com

APPLICATION CONSIDERATIONS

The proper selection and application of power transmission products and components, including the related area of product safety, is the responsibility of the customer. Operating and performance requirements and potential associated issues will vary appreciably depending upon the use and application of such products and components. The scope of the technical and application information included in this publication is necessarily limited. Unusual operating environments and conditions, lubrication requirements, loading supports, and other factors can materially affect the application and operating results of the products and components and the customer should carefully review its requirements. Any technical advice or review furnished by Emerson Power Transmission Corporation and its divisions with respect to the use of products and components is given in good faith and without charge, and Emerson assumes no obligation or liability for the advice given, or results obtained, all such advice and review being given and accepted at customer's risk.

For a copy of our **Standard Terms and Conditions of Sale, Disclaimers of Warranty, Limitation of Liability and Remedy**, please contact Emerson Power Transmission customer service, 1-800-626-2120. These terms and conditions of sale, disclaimers and limitations of liability apply to any person who may buy, acquire or use an Emerson Power Transmission Corporation product referred to herein, including any person who buys from a licensed distributor of these branded products.